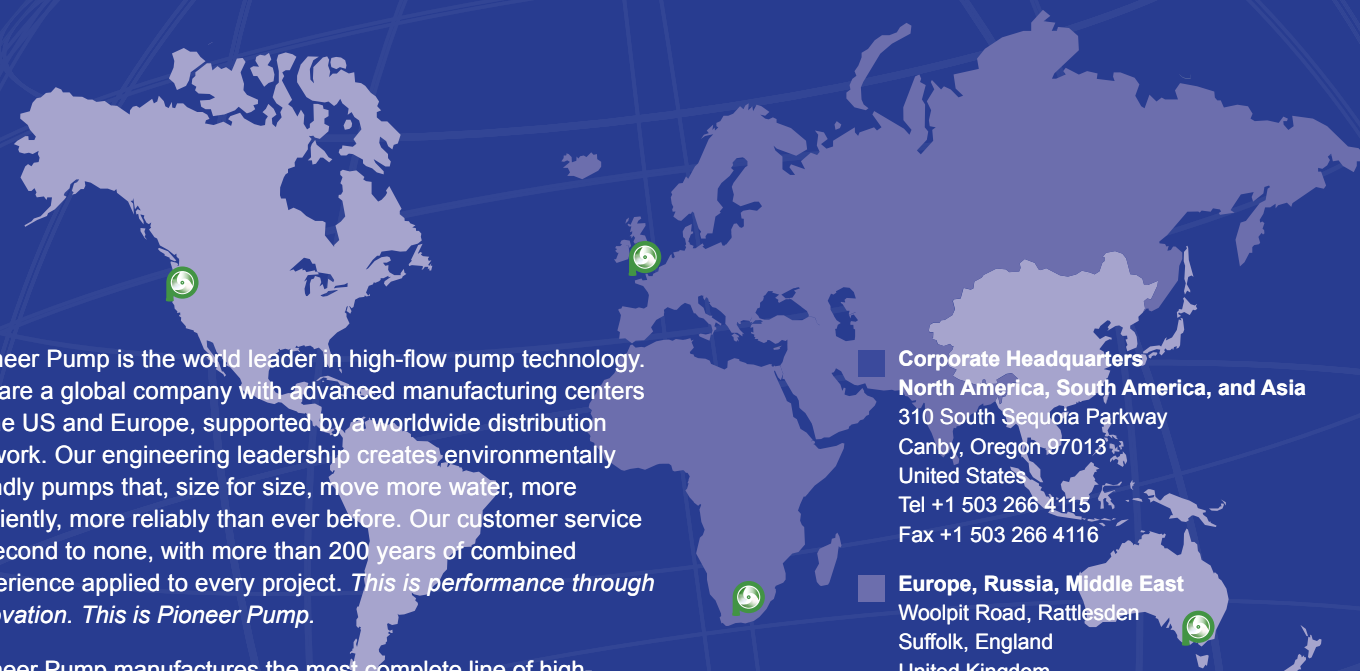




The pressure to produce never stops. Minimizing downtime and maximizing efficiency are your top priority. Fortunately, you can rely on the innovation of Pioneer Pump. Our end-suction centrifugal, self-priming wet-prime, and vacuum-assisted dry-prime pumps are engineered and ruggedly constructed to be ultra-reliable and highly efficient. **Because you've got your priorities straight. So do we.**



Pioneer Pump is the world leader in high-flow pump technology. We are a global company with advanced manufacturing centers in the US and Europe, supported by a worldwide distribution network. Our engineering leadership creates environmentally friendly pumps that, size for size, move more water, more efficiently, more reliably than ever before. Our customer service is second to none, with more than 200 years of combined experience applied to every project. *This is performance through innovation. This is Pioneer Pump.*

Pioneer Pump manufactures the most complete line of high-performance pumps available for solids and clear liquids handling:

- **Pioneer Prime Series**
Vacuum-assisted, automatic priming, run-dry pumps
- **Standard Centrifugal Series**
Standard end suction centrifugal pumps
- **Self-Priming Series**
Standard self-priming pumps in a variety of configurations
- **Hydraulic Submersible Series**
Pumps and power units available for submerged pumping duties

■ **Corporate Headquarters**
North America, South America, and Asia
310 South Sequoia Parkway
Canby, Oregon 97013
United States
Tel +1 503 266 4115
Fax +1 503 266 4116

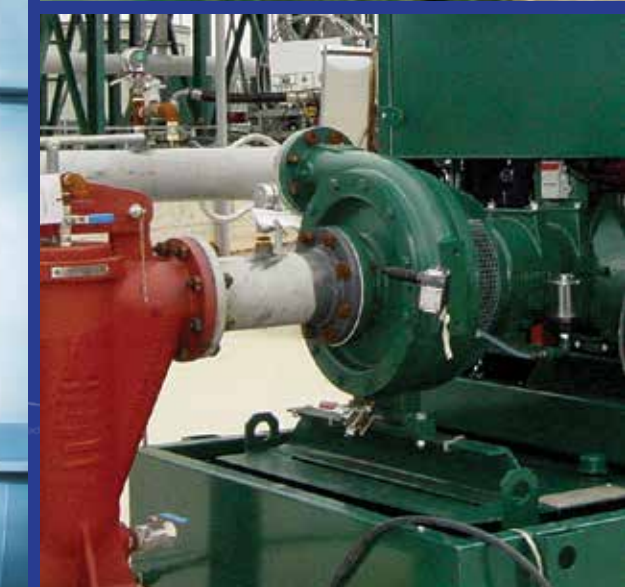
■ **Europe, Russia, Middle East**
Woolpit Road, Rattlesden
Suffolk, England
United Kingdom
Tel +44 (0) 1449 736777
Fax +44 (0) 1449 737322
enquiries@pioneerpump.co.uk

■ **Africa**
Unit F4 Dekema Park, 284a Dekema Road
Wadeville, Germiston, South Africa
Tel +27 (0)11 824 0085
Fax +27(0)11 824 0084
sales@pioneerpump.co.za

■ **Australia**
Unit 1, 67 Proximity Drive
Sunshine West, Victoria 3020
Australia
Tel +61 (0) 423 648 140

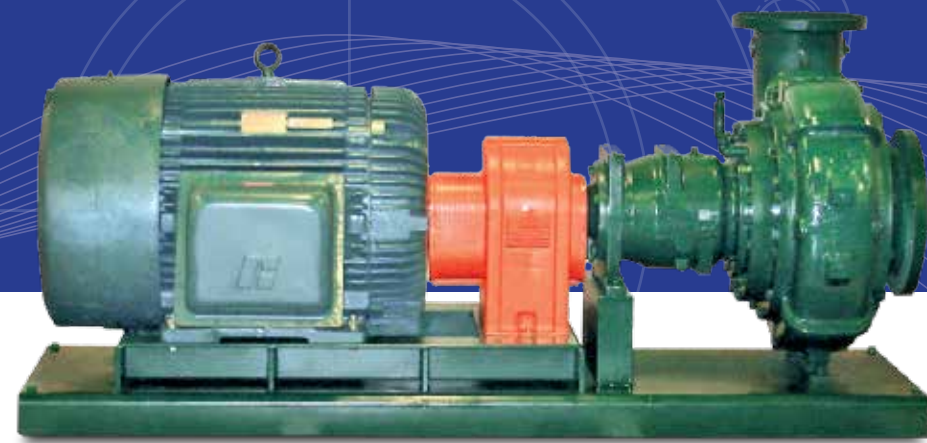
www.pioneerpump.com

Distributed by:



Industrial





Our customers rely on our high-efficiency, extreme-performance pumps in the most demanding industrial applications.

Engineering Leadership

Pioneer Pump's leading-edge innovation has created the industry's best pump designs. Size for size, our pumps move more product, more efficiently than our competition. You get extreme performance while using less energy, giving you the best lifetime value in an environmentally and budget-conscious world. The large eye area and low NPSHr provide better suction lift and vapor handling. Another patented innovation is the Pioneer Prime's PosiValve™ positive sealing priming valve, which allows for quick priming with no product carryover. Extreme performance, enhanced reliability, superior materials of construction, ease of maintenance, all using less energy.

Built to Last

Pioneer Pumps are built to stand the test of time. We lead the industry with our standard use of the highest-quality materials, like ductile iron volutes, CA6NM stainless steel impellers and 17-4 PH stainless steel shafts. Bearing frames with oversized bearings, heavy-duty shafts, and lip seals or bearing isolators also work to extend pump life while tungsten vs. silicon carbide seal faces with Viton® elastomers prevent leakage and damage for less environmental impact. Invest in Pioneer Pump — and invest in peace of mind.

Customer Solutions

Pioneer Pump won't just sell you a pump. We use our combined 200 years of experience to solve your toughest pumping challenges. Innovative modular designs with a variety of mounting configurations allow for maximum flexibility while reducing parts inventory. We also have the expertise to custom-design pumps to meet your needs if one of our standard pumps can't. Options such as duplex stainless steels and hardened irons are readily available for the most difficult applications. For those rare occasions you need it, we get you back up and running quickly with an extensive inventory of replacement pumps and parts, stocked and available through our global distribution network.

Experience performance through innovation. Experience Pioneer Pump.

A Pump for Every Industry

*Pioneer Pump innovation goes into every pump. No matter what industry you're in. No matter what your application demands. We can meet your needs with the **most durable, efficient pumps available.***



Energy

Centrifugal pumps handle wastewater, sump waste and other liquid transfer. Durable enough for a variety of demanding applications, including corrosive liquids and elevated temperatures.



Paper Mills

We manufacture pumps from a variety of metallurgies that stand up to the toughest paper mill applications, such as corrosive black and white liquor, mill effluent and sump applications.



Food Processing

Impeller design has a large eye area for low NPSHr and increased vapor-handling capability with higher performance. Ideal for food handling, hot cooking oil, blanching, waste handling and wash-down.



Petrochemical

When a high-performance pump is needed for chemical transfer, tank reclamation, digester pumping and more, our high-efficiency design excels while saving energy and increasing productivity.



Mining

Extreme performance generates high flow and high head, perfect for dewatering applications. Our pumps are ruggedly constructed to take the abuse of the corrosive and abrasive applications found in mining.



Oil Field

Pump models are available to handle drilling mud, water transfer, filtration and various other oil field applications. Constructed with heavy-duty castings and oversized rotating assemblies, these pumps withstand the toughest of oil field applications.

Pioneering Features

- Heavy-duty modular construction designed for the industrial market
- Oversized shafts and bearings for exceptional reliability in demanding conditions
- Chromed shafts with lip seals or bearing isolators standard for superior bearing and shaft protection
- Standard mechanical seal construction includes tungsten carbide vs. silicon carbide seal faces, Viton® elastomers and stainless steel hardware
- Patented PosiValve stainless steel positive sealing priming valve
- Run-dry capability
- Low NPSHr impeller designs for exceptional suction lifts
- Back pull-out design for ease of maintenance and downtime
- Ductile iron volutes and impellers designed for long life
- 17-4 PH stainless steel shafts for corrosion resistance
- Available in a variety of mounting configurations

Experience the benefits of our high-efficiency, self-priming pumps. Benefits include reliability, ease of maintenance, high efficiency and superior performance.



Performance Reliability Durability...

Get it all with a Pioneer Pump

Contact us today to learn more about our complete line of pumps and accessories.

ph: **503-266-4115**

www.pioneerpump.com

Pioneer Pump Solutions

Pump Series	Head	Flow	Sizes	Features
Standard Centrifugal (SC)	Up to 700+ feet 210m	20– 18,000 GPM 4–4,000m ³ /hr	1½–18 inches 40–450mm	High-performance, end-suction centrifugal pumps with high efficiency and low NPSHr. Solids handling or clear liquids. Run-dry capability. Ideal for: water transfer, wastewater, high-pressure jetting, dewatering.
Pioneer Prime (PP)	Up to 700+ feet 210m	20– 18,000 GPM 4–4,000m ³ /hr	1½–18 inches 40–450mm	Vacuum-assisted, automatic priming, run-dry pumps. Solids handling or clear liquids. Ideal for: digesters, tank cleaning, sump pumping, slurry handling, dewatering, drilling mud transfer.
Self-Priming (ES, P, PT and PE)	Up to 200+ feet 60m	20–3,500 GPM 4–795m ³ /hr	1½–10 inches 40– 250mm	Self-priming. Solids handling or clear liquids. Ideal for: water transfer, sump pumping, drilling mud, filtration.