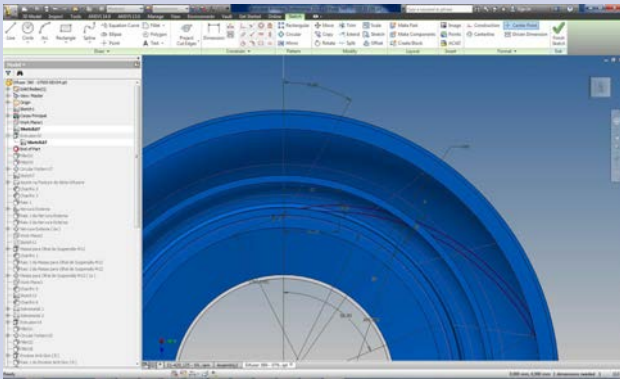
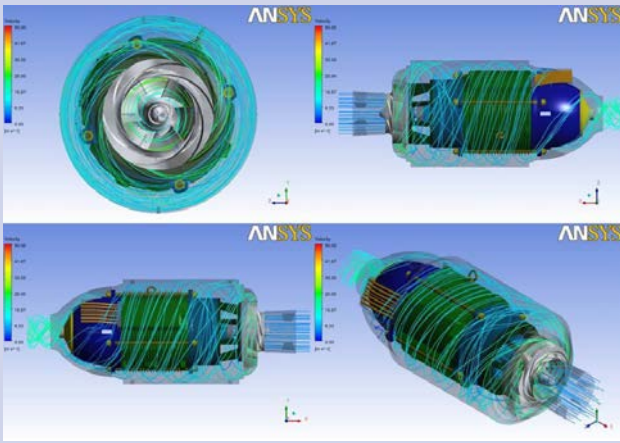




*Amphibious
Pump Line*

HIGRA

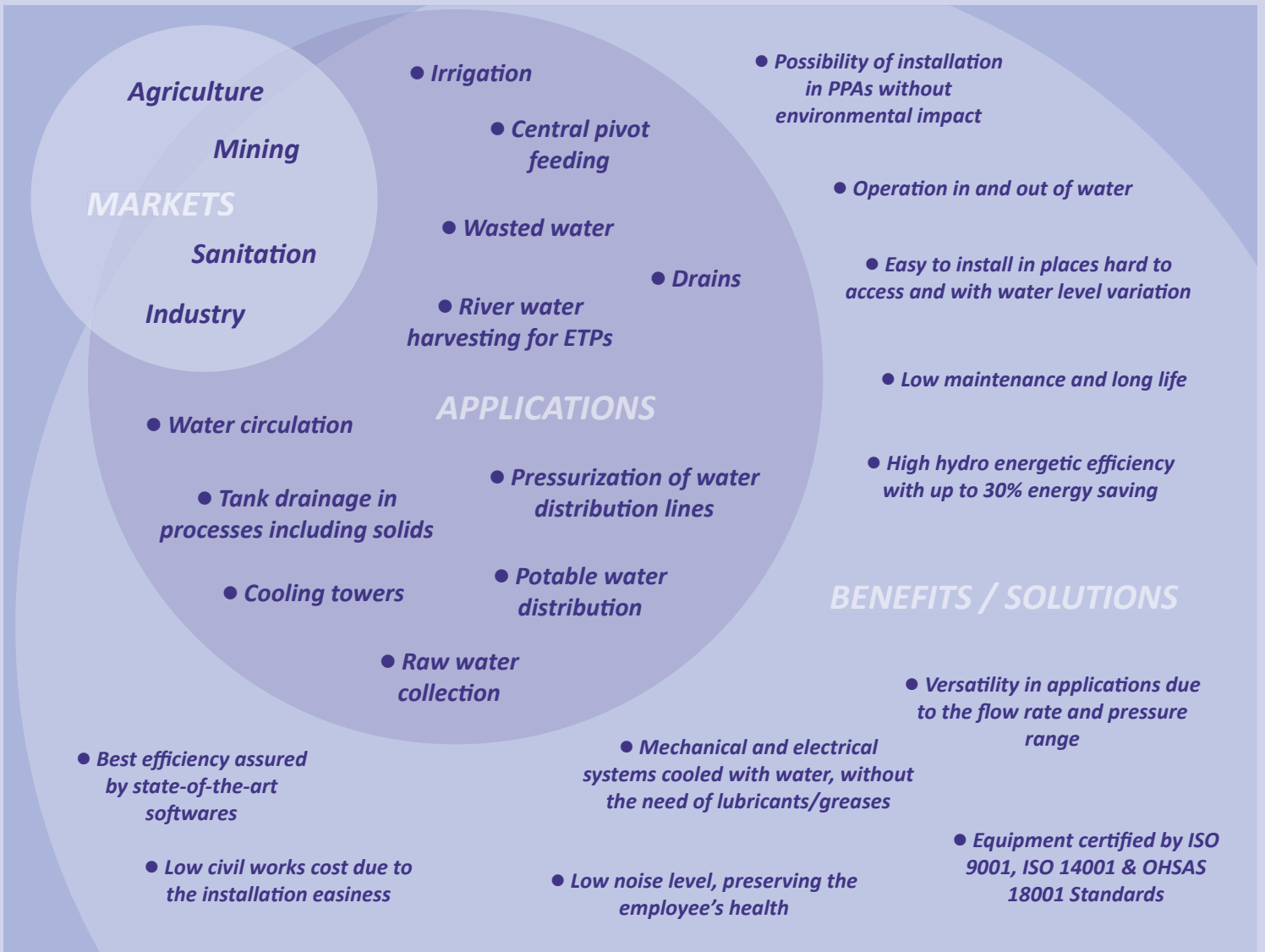
Amphibious Pump Line



The amphibious pumping concept is HIGRA's pioneer and exclusive development. The ability to operate in and out of water with a same equipment results from the unique design adopted by the engineering team. The water flux, which comes into the pump through a flanged suction, goes across a centrifugal rotor and alongside the motor. This system assures great thermal exchange, low noise level (less than 60Db), installation versatility, low maintenance and high energetic efficiency.

All HIGRA's activities are based on the sustainability principles, from the pump creation to installation. State-of-the-art softwares allow simulation of field conditions in order to get the best performance results. All pumps are submitted to several and strict tests at the Hydro Energetic Test Laboratory to meet its real performance.

The use of amphibious pumps at pumping stations is an alternative to those looking for high return on investment and reliability.

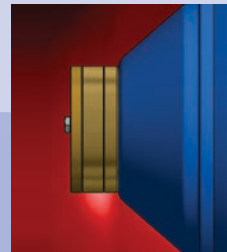
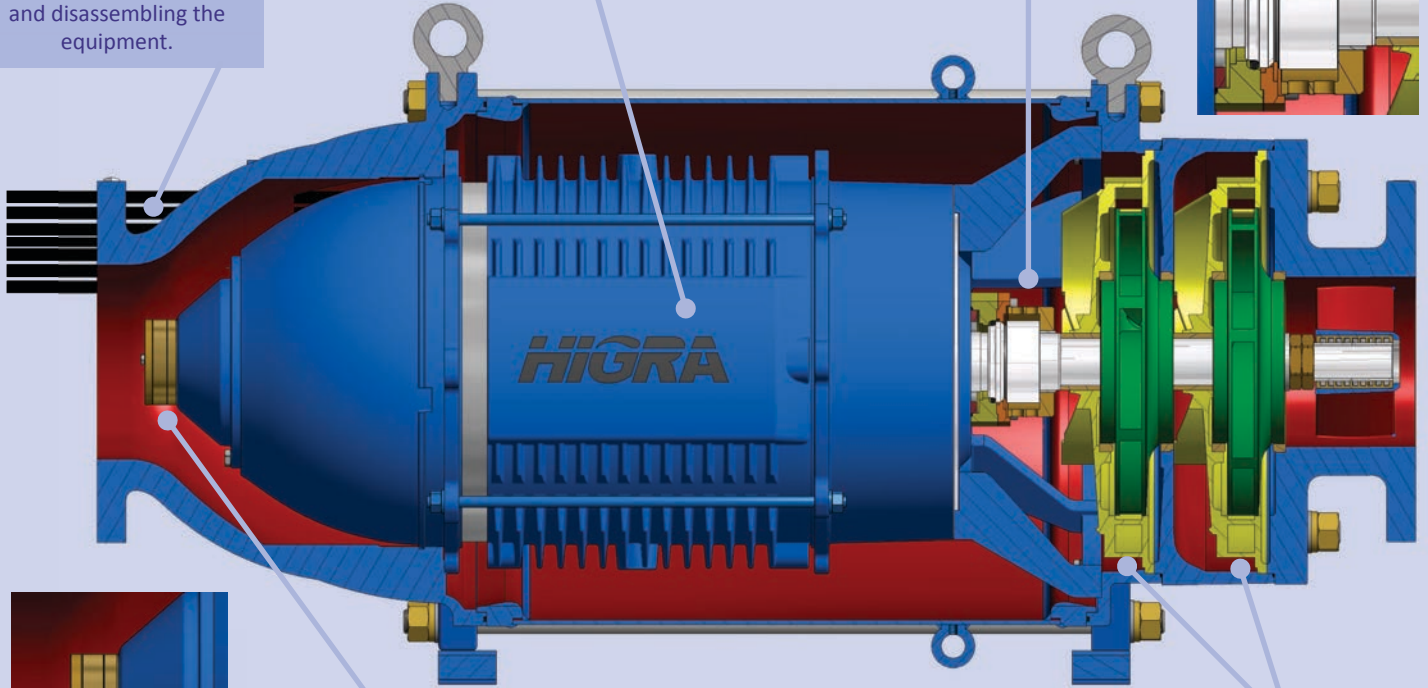
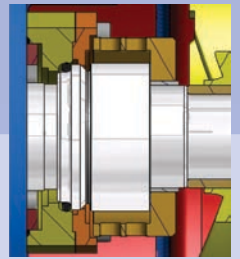


Features

Split cable glands that makes easier assembling and disassembling the equipment.

HIGRA motor frame that provides better cooling and efficiency.

Mechanical seal in stainless steel with multiple springs and centrifugal system that protects against abrasive particles.



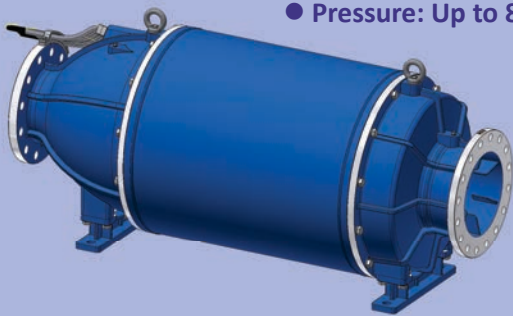
Pressure equalization filter that allows the equipment to work with high pressures without damages to its inner parts.

Rotors and Diffusers designed with state-of-the-art software (Inventor & ANSYS CFX), through hydrodynamic simulations that provide high hydro energetic efficiency.

Pump Styles

RADIAL / HIGH PRESSURE

- Flow Rate: 15 – 2600 m³/h (4.1 – 722 lps)
- Power: 10 – 600 HP (7.35 – 441 kW)
- Pressure: Up to 80 mwc



MULTI STAGE RADIAL / HIGH PRESSURE

- Flow Rate: 14 – 2000 m³/h (3.9 – 555 lps)
- Power: 15 – 600 HP (11 – 441 kW)
- Pressure: Up to 295 mwc



Three-phase motors
 - 50 and 60 Hz
 - 2 – 8 poles
 - LV: 220 – 760 V
 - MV: 1000 – 6900 V

MIXED / HIGH FLOW RATE

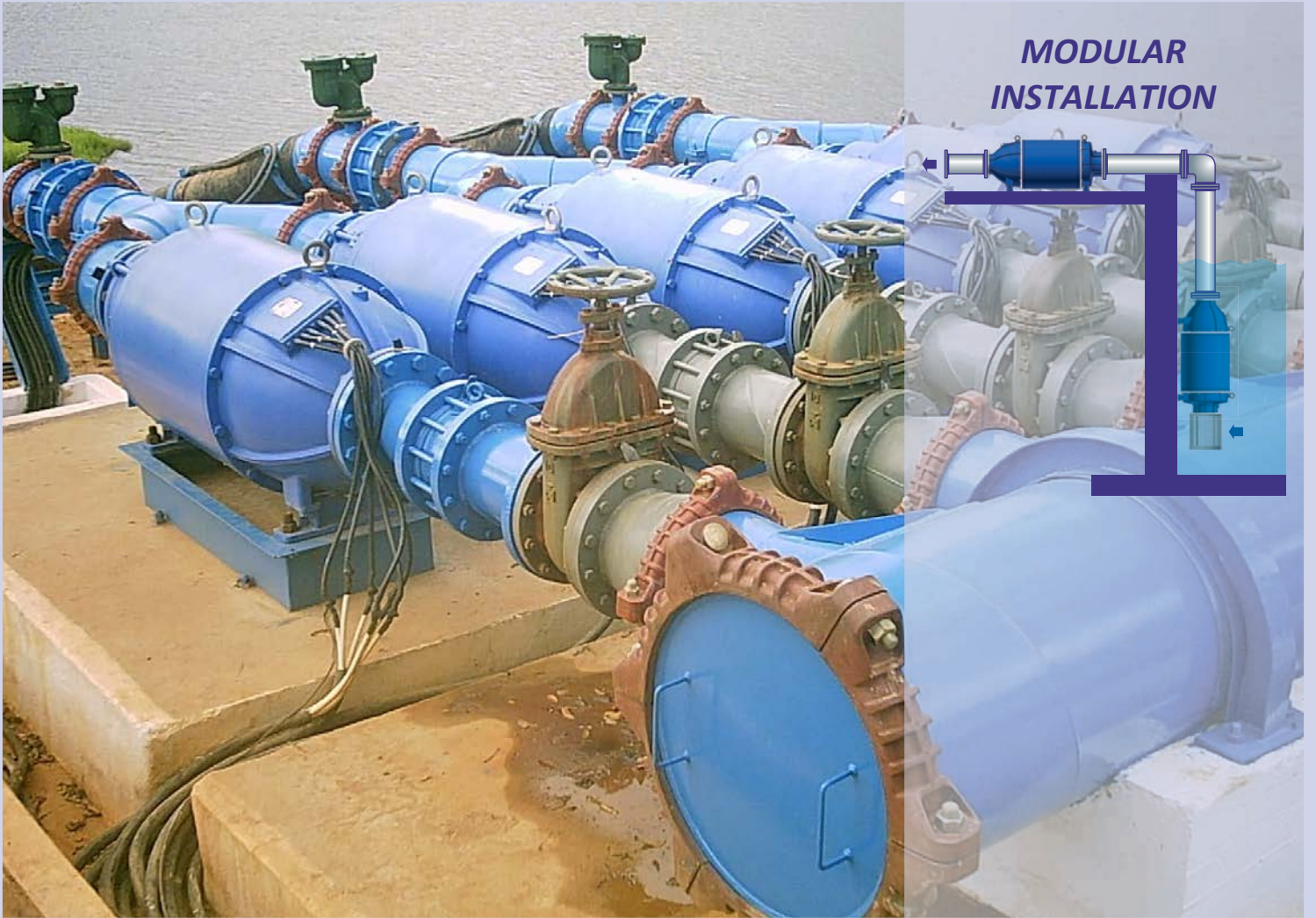
- Flow Rate: : 120 – 2500 m³/h (33 – 695 lps)
- Power: 12 – 600 HP (8.83 – 441 kW)
- Pressure: Up to 50 mwc

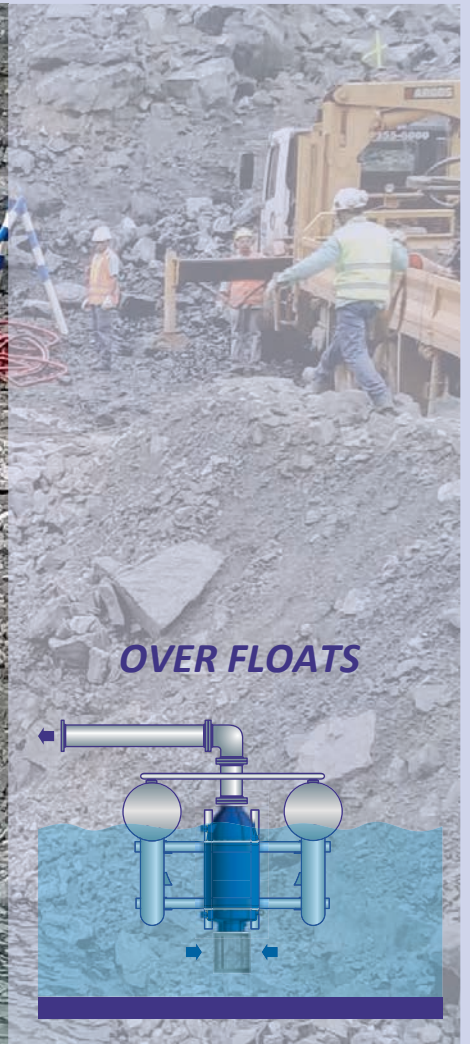


SEMI AXIAL / HIGH FLOW RATE LOW PRESSURE

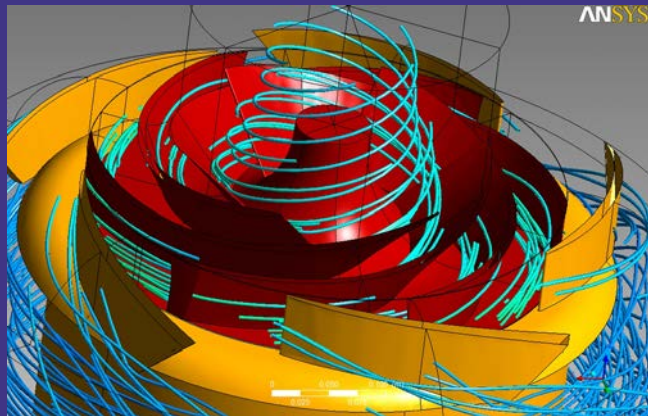
- Flow Rate: 1000 – 9000 m³/h (278 – 2500 lps)
- Power: 75 – 600 HP (55 – 441 kW)
- Pressure: 4 to 18 mwc











Enter and know more about our solutions and cases



Know how our solutions might offer return on investment and profit



Know more about sustainability



Know more about hydro energetic efficiency



higra.com.br

HIGRA

Rua Dilceu Elias de Moura, 345
Bairro Arroio da Manteiga
São Leopoldo - RS
CEP 93.135-390
Phone: 55 (51) 3778-2929
contato@higra.com.br